



# **TRACKING AND REPORTING ACTIONS FOR CONSERVATION OF SPECIES**

*Expanded PAG Inaugural Meeting*



# Wildlife TRACS Purpose & Background

## *Why You Are Here & Why You Should Care*

*“The Committee encourages the Service and the program partners to complete the Wildlife TRACS database so that the program can better demonstrate its ability to prevent at-risk species from having to be listed under the Endangered Species Act.”*

*- DEPARTMENT OF THE INTERIOR, ENVIRONMENT, AND  
RELATED AGENCIES APPROPRIATION BILL, 2012*

# Wildlife TRACS Purpose & Background

## *Why You Are Here & Why You Should Care*

- 2007 House Appropriations
  - Outcome and performance reporting
  - Geo-spatial mapping
  - Standardization in reporting
  - Landscape-level cooperation/data sharing
- Office of Management and Budget

### **NOT PERFORMING**

#### **Results Not Demonstrated**

- **While the program has a clear purpose and design, the program needs to develop long-term outcome and annual output-oriented performance goals in conjunction with partners.** The program needs to emphasize outcome goals that reflect on the improvement of fish and wildlife resources. Achieving these goals depends on the efforts of many partners.





# **Wildlife TRACS Purpose & Background**

## *Why You Are Here & Why You Should Care*

### **And if that is not enough ....**

- Threats to appropriated grants (SWG)
- Threats from diminishing support for excise taxes
- Our Public Trust
  - Transparency
  - Accountability
  - Conservation of American Wildlife
- Future of the North American Model

***Take Home Message: The Stakes are Enormous!!***



# Meeting Our Business Needs

- The DOI Financial and Business Management System (FBMS) will be deployed in November, 2011.
- The FWS Federal Aid Information Management System (FAIMS) will transition to FBMS.
- The non-financial functions of FAIMS will be replaced by a new system—Wildlife TRACS—in October, 2012.



# Meeting Our Business Needs

## *How Do TRACS, FAIMS and FBMS Differ?*

- Wildlife TRACS continues all functions of FAIMS except for financial reporting assumed by FBMS.
- Wildlife TRACS includes new functions found in neither FAIMS nor FBMS.

# Meeting Our Business Needs

## *How Do TRACS, FAIMS and FBMS Differ?*

FUNCTIONS	FAIMS	FBMS	TRACS
<i>Accomplishments</i>	Lmtd	No	Yes
<i>Apportionment</i>	Yes	No	Yes
<i>Contact Information</i>	Yes	Yes	Yes
<i>Document Log</i>	Yes	Yes	Yes
<i>Grant Fiscal Details</i>	Yes	Yes	Lmtd
<i>Grantee Access</i>	Lmtd	No	Yes
<i>Land Records</i>	Yes	No	Yes
<i>License Certification</i>	Yes	No	Yes
<i>Objectives &amp; Goals</i>	Lmtd	No	Yes
<i>Online Reporting</i>	No	No	Yes
<i>Project Description</i>	Yes	No	Yes
<i>Public Access</i>	Lmtd	No	Yes
<i>Spatial Features</i>	No	No	Yes
<i>Species &amp; Pop. Status</i>	No	No	Yes
<i>Strategies &amp; Plans</i>	No	No	Yes
<i>Track/Report Project % Cons. Action Costs</i>	Yes	No	Yes



# Meeting Our Business Needs

## *Why the Change?*

- TRACS based reporting will greatly enhance the Service's ability to report on the outputs and outcomes of WSFR administered grant programs.
- Improved reporting capabilities are required to ensure continued funding of grant programs in a tough financial climate.
- Opportunity to improve and streamline how we collect, use, and disseminate information about grant programs and accomplishments.

# Meeting Our Business Needs

## *Online Reporting*

- State entry of information in TRACS in lieu of submission of conventional performance reports
- Benefits:
  - Increased efficiency
  - Enhanced ability to report on the outputs and outcomes of grant programs in standard formats
  - Increased accessibility to information useful for scientific and management purposes
  - Increased likelihood of continued funding for existing grant programs in this climate of financial crisis and budget cutting



# Brief History of Wildlife TRACS

## Washington State Pilot (Jan. 2010 – Dec. 2010)

- Build partnerships and develop a prototype project tracking system for State Wildlife Grant Program

## Northwest States (and additional states) Rollout (Jan. 2011-Present)

- Broaden state participation and expand and implement prototype across multiple states

## National Rollout and Implementation (Current Phase)

- Continue to broaden state participation and develop a national project information system.
- Data TRACS, Public TRACS



# Brief History of Wildlife TRACS

## *Project Partners*

### **USFWS – WSFR:**

Hannibal Bolton, AD - Wildlife and Sport Fish Restoration  
DC and Regional staff

### **Project Advisory Group (PAG):**

Washington	Arizona	Georgia
Idaho	Michigan	Missouri
Montana	New Jersey	South Carolina
Virginia	Wyoming	Massachusetts
Utah	AFWA	Nature Serve
TNC	Foundations of Success	Defenders of Wildlife

### **Cooperating Agencies:**

USGS	Nature Serve	AFWA
------	--------------	------

### **Contractor:**

Paladin Data Systems, Poulsbo, Washington



# Brief History of Wildlife TRACS

## *Project Accomplishments*

- Developed successful prototype
  - The project development team has since modified for national roll out
- Established support for the project (e.g., States, Congress)
- Strengthened partnerships
  - Project Advisory Group
  - Working Committees





# What is Wildlife TRACS?

Wildlife TRACS is the new tracking and reporting tool of the Wildlife and Sport Fish Restoration Program (WSFR).

- Highlights include robust geo-spatial, multi-portal, and decision support capabilities
- TRACS replaces the FAIMS database, set to expire on October 1, 2012, as required by the Department of the Interior (DOI).



# **When Does Wildlife TRACS Take Effect?**

**October 1, 2012, for all  
Programs and Grantees**



# How Wildlife TRACS Meets WSFR Needs

- Wildlife TRACS will offer critical geo-spatial viewing and mapping capabilities as well as performance outcome and strategic support tools not in FAIMS but mandated by OMB, GPRA and the U.S. Congress.
- Wildlife TRACS will:
  - Map and display projects and actions in a geospatial environment with multiple GIS layers
  - Track and report project outputs, effectiveness measures, and species and habitat outcomes
  - Facilitate strategic conservation by open standards, shared data, and networking among the States, Territories and Service

# What Exactly Does TRACS Track?

- **Plans**
  - An agreed upon set of projects and actions designed to help an agency achieve specific goals, including conservation of species or habitats within a defined geographic region.
- **Projects**
  - User defined to describe one or more related actions undertaken by a group of practitioners to achieve specific goals and objectives. A project is geographically represented by a point and polygon(s) independent of scale and can be related to both parent and/or child projects. Associated data may include: project team members/organizations, target species and/or habitats, threats/drivers, goals/objectives, conservation actions, estimated costs, and funding sources.

# What Exactly Does TRACS Track?

- **Conservation Actions**
  - Interventions undertaken by a project team to reduce threats, capitalize on opportunities, or restore natural species and systems (equivalent to a “strategy” in the *CMP Open Standards*). An action is user defined and can be represented spatially by point(s), line(s), or polygon(s) independent of scale.
- **Funding Instruments**
  - Award information will be uploaded into TRACS from FBMS on a regular basis and can be associated with projects and conservation actions.
- **Conservation Objectives**
  - Concise, specific statements of what exactly will be accomplished by a plan, project, or action as it relates to species or habitats.

# What Exactly Does TRACS Track?

- Effectiveness Measures
  - A metric of accomplishment describing how successfully goals or objectives were met by implementation of specific actions.
- Land Data
  - Land acquisition and disposal is simply another type of conservation action.

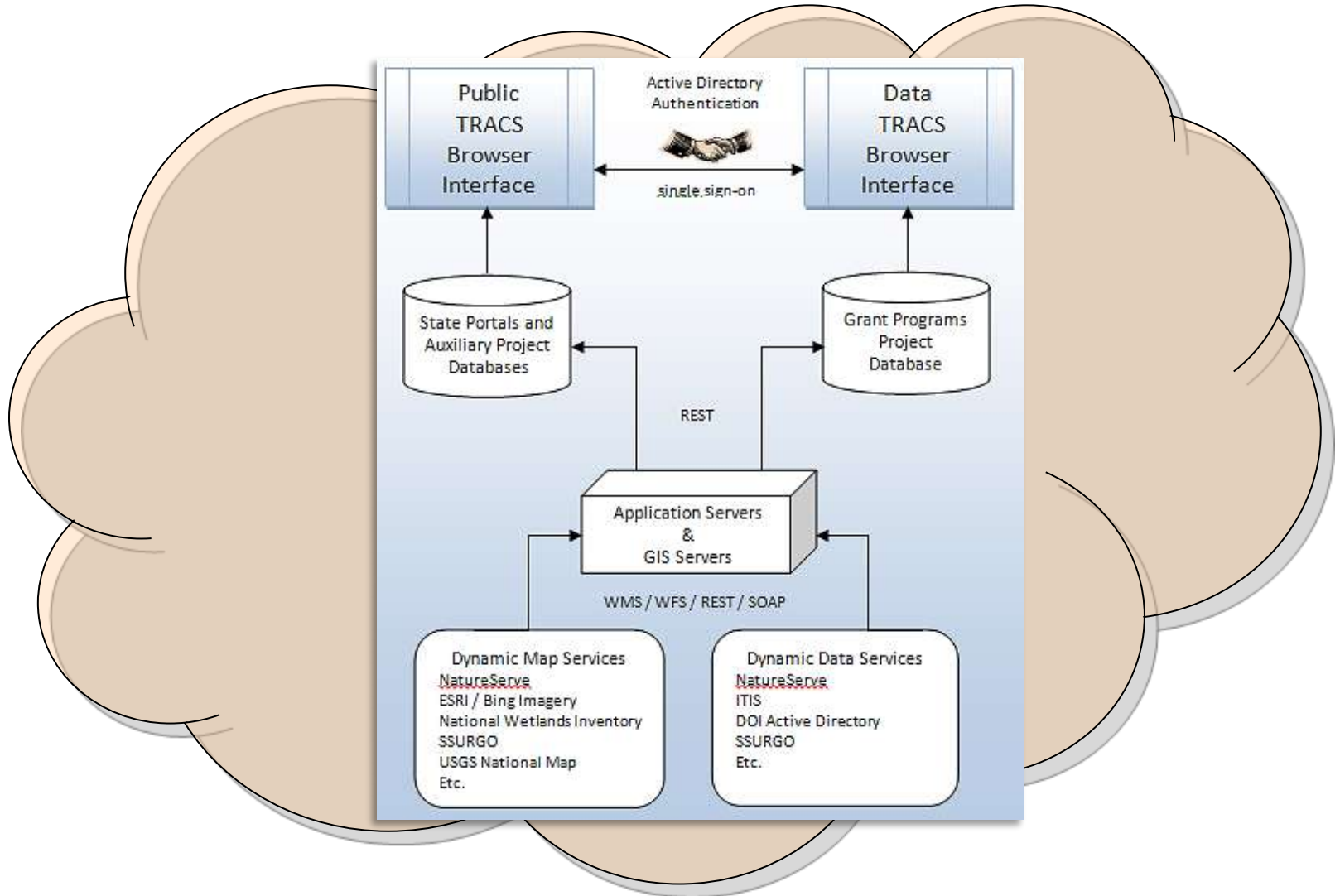
# What Does TRACS Offer?

- Wildlife TRACS offers customization options, including look-and-feel, data pick-lists, portal views, and other user specific preferences.
- TRACS is a simple but powerful geospatial application. Spatial data is available for reporting and download.
- TRACS brings together internal and external data sources like USGS, FWS, USDA, NatureServe, and more.
- TRACS supports a data upload API for States.

# Where We Are Today?

- WSFR has initiated development activities for the data collection component of TRACS—a.k.a. Data TRACS.
- WSFR is nearing completion of a contract with Paladin Data for the viewer component of TRACS—a.k.a. Public TRACS.
- Prototypes of Data TRACS will be released in late December for review by the PDT and eventually the PAG.

# Design and Architecture



# What is Public TRACS?

- Public TRACS is the public face of Wildlife TRACS.
- Each State, Territory and the District of Columbia has its own secure, custom viewing portal.
- States have the option of a fully configurable data entry portal for non-WSFR information management.
- Public TRACS display WSFR grant information, maps, and reports side-by-side with State configurable data.
- States can work with Paladin Data to extend their data entry portal for non-WSFR information.

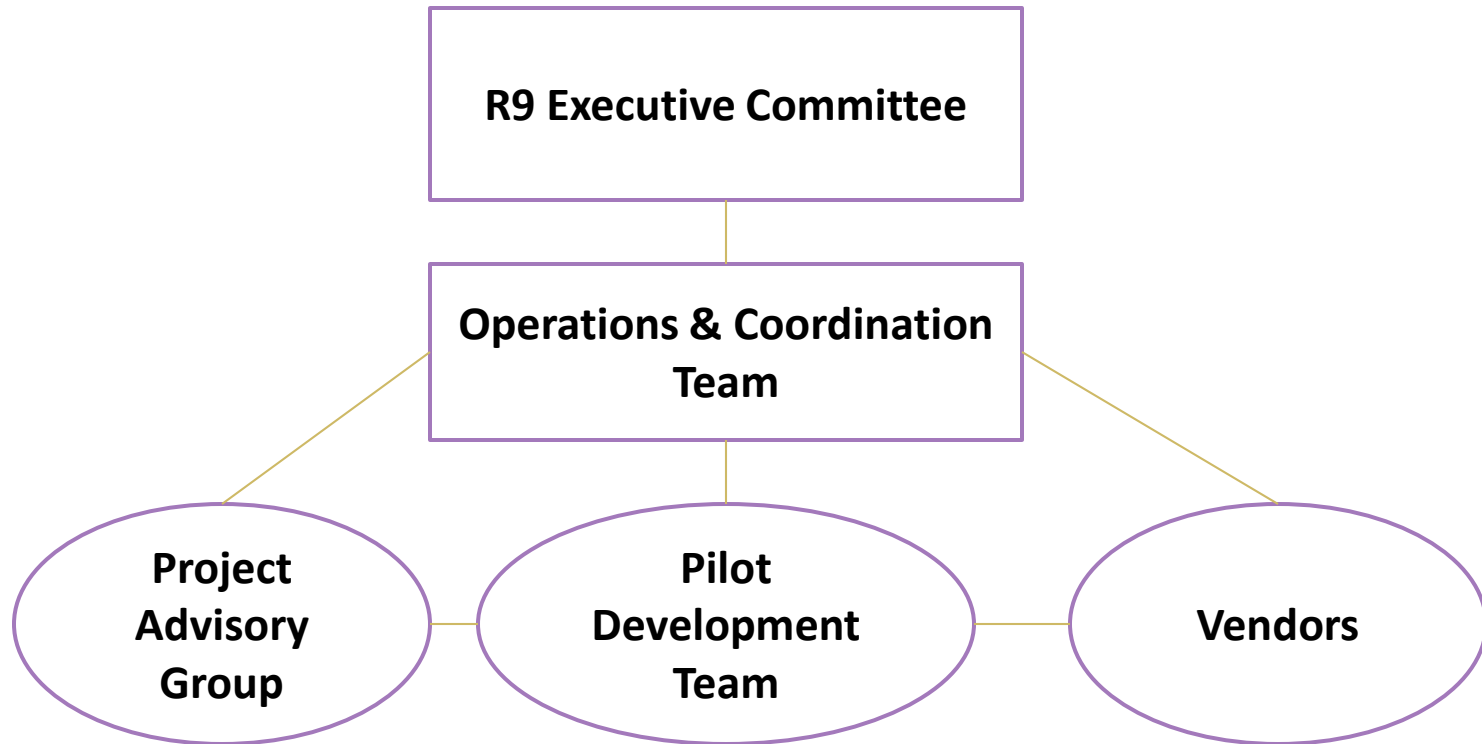
# What is Data TRACS?

- Data TRACS is used for WSFR grant program information management.
- Data TRACS is accessed through Public TRACS portals.
- Data TRACS is a geo-database for capturing information related to plans, projects, outcomes, funding, strategies, partnerships and species.
- Information in Data TRACS can be published by the States for viewing in Public TRACS.

# What about FBMS?

- General information about financial awards will be periodically downloaded from FBMS and uploaded into Data TRACS.
- Projects and Conservation Actions are linked to award information.
- Projects can be entered earlier or later into Data TRACS with a proposed, planning, active, completed, or cancelled status.
- Data TRACS contains only ESTIMATED costs and is not an auditable system. FBMS is the official system for grant fiscal management.

# Wildlife TRACS Organization



# Wildlife TRACS Organization

- Region 9 Executive Committee

Hannibal Bolton and Washington-Denver (R9) Staff

- Operations & Coordination Team

Ron Essig (FWS), Karl Hess (FWS), Dan Hogan (FWS), Luther Zachary (FWS), Chris Burkett (VA), Erik Neatherlin (WA), Nick Salafsky (FOS), Tim Smith (Paladin)

- Project Advisory Group (PAG):

Currently 48 States , DC, Puerto Rico, US Virgin Islands; Will Reach all 50 States by end of September plus Conservation Registry, NatureServe, TNC

- Pilot Development TEAM (PDT)

11 States - AZ, FL, GA, ID, MI, MO, MT, UT, VA, WA, WY (10 from Original PAG)

- Vendors

Foundations of Success, NatureServe, Paladin Data



# TRACS Working Committees

- Standards & Measures – *Dan Hogan Lead*
- Streamlining – *Ron Essig Lead*
- Population Module – *Chris Burkett Lead*
- *Outreach and Communication – Karl Hess Lead*



# TRACS Working Committees

- Applications and Guidance – *Ron Essig Lead*
- Training – *TBA*
- WSFR Regional Representatives – *Ron Essig Coordinator (General Review and Advice)*

# PAG Role and Expectations

- Keep abreast of TRACS development and its effects on state grant administration
- Facilitate agency participation in product review and testing
- Communication with State Directors and key staff



# PAG Role and Expectations

## *Public TRACS Development Assistance*

- PAG focuses more on Public TRACS by helping guide development
- Pilot Development Team focuses on Data TRACS
- PAG provides input on:
  - Configuration of State portals
  - Desired reports

# PAG Role and Expectations

## *Data TRACS Products Review*

- Review of work products of others
- PDT is first level review
- PAG is second level review
- Opportunity to join working committees

# PAG Role and Expectations

## *Assist in IT Survey Among States*

- Identify spatial data sources within State (e.g., land records, boating access locations)
- Contact persons
- Ability to upload these data/interface with TRACS

# PAG Role and Expectations

## *Training Liaisons*

- Point of contact for future training
- Coordinate training logistics:
  - Who
  - When
  - Where



# PAG Role and Expectations

## *Communications Liaisons*

- Liaisons to State Directors and key staff
- Homework from this call (and ongoing):
  - Brief Directors and key staff
  - Powerpoint slides from this call can be used
  - <http://faims.fws.gov/datatracs>

# PAG Role and Expectations

## *Bottom Line PAG Workload*

- Monthly calls/WebEx
- Focus on Public TRACS development
- High-level review of Data TRACS products
- Special projects (e.g., IT survey, training contact)
- Liaisons to State Directors and key staff

# REMINDERS

- Monthly Call Schedules
  - 3<sup>rd</sup> Tuesday of Every Month through October 2012 (Next Call Tuesday, September 20)
  - Call-in/Webinar Information and Call Agenda Delivered by 2<sup>nd</sup> Tuesday of Every Month
  
- TRACS Web Site
  - [www.fws.ekosystem.us](http://www.fws.ekosystem.us) (Public Viewing)
  - Face Lift Upcoming
  - All Documents/Meeting recordings Available
  - Site for Public TRACS Development  
(<http://fws.ekosystem.us> – Authorized Access)



# Q & A

## Questions and Answers

**Primary Contact for TRACS**

**Karl Hess, Ph.D.**

**National Conservation Policy Analyst**

**U.S. Fish & Wildlife Service**

**4501 N. Fairfax Drive, Rm 4032**

**Arlington, VA 22203**

**703-358-2293 Office**

**703-946-0748 Cell**

**E-mail : [Karl\\_Hess@fws.gov](mailto:Karl_Hess@fws.gov)**