



Wildlife Action Plan
Nationwide Synthesis:
Wildlife Conservation Partnership
Opportunities

Karen Terwilliger and Becky Gwynn

Organization of Fish & Wildlife Information Managers

September 20, 2007

Guidance and Funding

- **Developed by the Association of Fish and Wildlife Agencies (AFWA), to continue to highlight State Action Plans, contract with Terwilliger Consulting, Inc.**
- **Funded by The National Fish and Wildlife Foundation, Doris Duke Charitable Trust, and federal agency partners including US Fish & Wildlife Service, the US Geological Survey, the US Department of Defense**
- **Guided by a working group from 10 states (Michigan, Virginia, Washington, Wyoming, Georgia, Montana, Missouri, Nebraska, New York, and New Hampshire.) and representatives from the US Geological Survey, the US Fish and Wildlife Service, TNC, and NatureServe.**

The focus of this report is to identify:

- The most pressing issues that states have in common and which of these issues or themes can best be addressed by a concerted effort at a larger scale.
- How State Wildlife Action Plans can help guide these efforts and focus additional attention and resources to address them at the state and broader landscape scale.
- Common challenges and obstacles that states share, as well as actions to address them as identified in their Action Plans.

Highlight

1- State Wildlife Action Plans

Highlight the importance of states having the capacity to implement their State Action Plans.

2- Regional and National Partnership Opportunities

ID State Action Plan priorities as key opportunities for partners to support state Wildlife Action Plan implementation as well as additional opportunities at the broader landscape, regional and national scales.

Similar to existing successful models (Joint Venture, PIF, PARC, etc)

Target Audience

- State Agencies
- Key Federal, State and Local Partners
- NGOs and Foundations



Approach

➤ **Planning and Design: ID Relevant Data & Data Management Tool (1st Qtr)**

- ✓ USGS , NBII et al., workgroup

➤ **Data Collection= State Survey Approach-47 responses (2nd Qtr)**

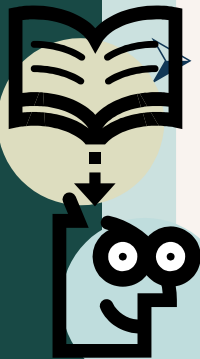
- ✓ State review and validation by staff, approval by directors

➤ **Analysis & Development of Key Themes (3rd Qtr)**

- ✓ State review and validation by staff, approval by directors
- ✓ Regional review workshops and meetings
- ✓ Expert/peer review (Heinz, NVC, etc.) & regional tech committees

Document Development and Draft Review (4th Qtr)

- ✓ Regional workshops, Associations
- ✓ Workgroup/State review



Recent Survey

Request to States (WDPM/ Plan Coordinators):

Please provide us your states:

- Top 20 Threats Identified in your Action Plan
- Top 20 Habitats Identified by your action Plan
- Top 20 Actions identified by your Action Plan
- Top 20 Research/survey needs in your Action Plan
- Top 20 Monitoring needs identified by your Action Plan
- Top 20 Species/groups identified by your Action Plan

From Survey to Tables to Text

Select a Region:

Threats for Audit	Threats Level 1 Counts	Nested Threats	Actions Level 1 Regional Comparison
Actions for Audit	Threats Level 2 Counts	Nested Actions	Actions Level 2 Regional Comparison
Data Gaps for Audit	Actions Level 1 Counts	Nested Habitats	Threats Level 1 Regional Comparison
Terrestrial Habitats For Audit	Actions Level 2 Counts	Nested Data Gaps	Threats Level 2 Regional Comparison
Actions Level 1 Repeats	Data Gaps Level 2 Counts		Habitats Level 1 Regional Comparison
Actions Level 2 Repeats	Habitats Level 1 Counts		Habitats Level 2 Regional Comparison
Aquatic Level 1 Counts	Habitats Level 2 Counts		Habitats Level 3 Regional Comparison
Aquatic Level 2 Counts	Habitats Level 3 Counts		Data Gaps Level 2 Regional Comparison
Action Percentages by Region		Nested Threat Counts	ABBREVIATED NESTED REPORTS
		Nested Action Counts	
		Nested Habitat Counts	
		Nested Data Gap Counts	

Presenting consistent, key information

Tables to text CHALLENGES:

Lack of consistency

- Use of different terms, etc.
- ✓ Used Classification systems to frame issues

Lack of specificity

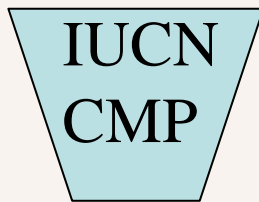
- Some states were very specific , others general
- Are these specific examples the most important regional ones

Framing each Key Issue:

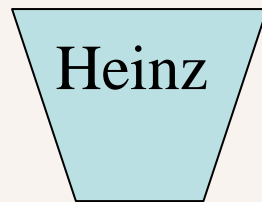
Classification systems provided consistent categories:

Threats

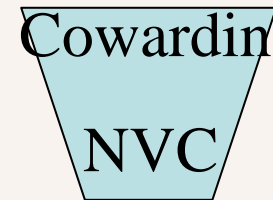
Actions



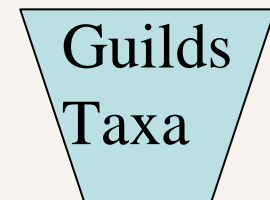
Data Gaps



Habitats



Species



And levels:

- 1. General** (IUCN/ CMP) Level 1=Pollution
- 2. Less General** (IUCN/CMP) Level 2= Ag/Forestry Effluents
- 3. Actual State Examples** Siltation and chemicals from farms and livestock feeding operations near streams

Threat Percentages Regional Comparison

Standardized Description	Midwest	Northeast	Southeast	West
Housing & Urban Areas	100%	89%	100%	100%
Commercial & Industrial Areas	82%	89%	73%	75%
Tourism & Recreation Areas		33%	36%	8%
Annual & Perennial Non-Timber Crops	73%	33%	64%	42%
Wood & Pulp Plantations	18%	44%	64%	17%
Fire & Fire Suppression	73%	33%	55%	67%
Dams & Water Management/Use	73%	78%	82%	75%
Other Ecosystem Modifications	73%	67%	64%	83%
Invasive Non-Native/Alien Species	100%	100%	73%	100%
Problematic Native Species	18%	56%	18%	42%
Household Sewage & Urban Waste Water	73%	100%	64%	75%
Industrial & Military Effluents	73%	100%	73%	75%
Agricultural & Forestry Effluents	73%	100%	55%	75%
Recreational Activities	55%	78%	18%	67%

Data Gap Percentages Regional Comparison

Data Gap Code	Standardized Description	Midwest	Northeast	Southeast	West
10.1	Research	80%	67%	90%	79%
10.2	Evaluation	40%	11%	50%	36%
10.4	Inventory	30%	22%	40%	7%
10.5	Monitoring	30%	78%	70%	71%
10.6	Property assessment & prioritization	50%	67%	40%	43%
10.7	Species assessment		22%	10%	7%
10.8	Threats assessment	40%	56%	40%	43%
10.9	Information collection & data management	40%	56%	60%	43%

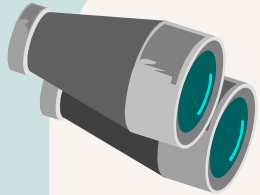
Action Percentages Regional Comparison

Action Code	Standardized Description	Midwest	Northeast	Southeast	West
1.1	Site/Area Protection	70%	89%	60%	36%
1.2	Resource & Habitat Protection	60%	100%	70%	57%
2.1	Site/Area Management	50%	67%	50%	64%
2.2	Invasive/Problematic Species Control	70%	44%	30%	57%
2.3	Habitat & Natural Process Restoration	70%	78%	60%	71%
3.2	Species Recovery	20%	22%	30%	36%
4.3	Awareness & Communications	90%	67%	60%	71%
5.1	Legislation	10%	67%	60%	7%
5.2	Policies & Regulations	20%	56%	40%	29%
5.4	Compliance & Enforcement	20%	44%	20%	36%
6.4	Conservation Payments	40%	33%	30%	50%
7.2	Alliance & Partnership Development	80%	67%	100%	71%
8.1	Planning	60%	89%	50%	86%
8.2	BMPs	20%	33%	30%	7%

Draft Outline

- **Executive Summary**
- **A Nation's Wildlife in the Balance**
 - History of Wildlife Conservation Success
 - The Current Challenge/New Millennium
 - State Wildlife Action Plans: Leave No Species Behind
 - Congress Takes Action...States Rise to the Challenge
 - The Roots and Growth of State Wildlife Grants
- **The Top Priority and Foundation: State Implementation**
- **Bringing the Big Picture Into Focus**
 - Many Plans, Many Partners: Common Themes
 - Putting the Pieces Together: Survey to Report
- **State Wildlife Action Plans: The Foundation and Building Blocks**
- **Regional Themes: Opportunities for Coordinated Action**
- **National Themes and Partnerships**
- **Appendices: Contacts and Resources**

Frame Key State Action Plan Issues



Regional and National Scale

- **Big Picture—Common Themes & Challenges i.e.:**
 - Habitat loss/degradation/fragmentation
 - Invasive species
 - Pollution
 - Natural systems alteration
 - Climate change/global warming, etc.
- **Obstacles to Implementation, i.e.:**
 - Lack of funding
 - Data gaps
 - Need for info dissemination for planning/land use



Example Regional Themes Southeast

Altered Ecosystems:

Aquatic: Impoundments and Water Quality

Opportunity/Need: Freshwater diversity

Target taxa - freshwater mussels, fish, etc

Focus Actions to Restore in stream flows and

Address barriers & sedimentation

Terrestrial: Native Forest Restoration

Fire Suppression and Longleaf Pine Restoration



Northeast Examples

Opportunity/Need: Grasslands & early successional habitat and GCN Species

Actions: Acquisition, habitat restoration, monitoring, land use planning

Opportunity/Need: Diadromous fish restoration

Actions: instream flow models and research, address barriers



Western Examples

Opportunity/Need: Energy development impacts

Target GCN species & habitats

Actions: Corridor identification; mitigation

- Coastal and Marine
- Deserts/ Mtns
- Water Quantity
- Energy, etc.



We are here



Final report 4th Qtr

Draft report reviewed
Draft report



Regional Narratives
Developed and reviewed



Director and staff review

Validation by states

Review by Regions 3rd Qtr



Compilation
Analysis 2nd Qtr

Classification System



Data Collection

Design- Survey

Planning

Work Group 1st Qtr

