


the OREGON CONSERVATION STRATEGY

Cooperative Registry of Conservation Actions

Presented by
Matthew Lawhead

Oregon
Dept. of
Fish and
Wildlife



Conservation Registry Overview

- Background: defining the need
- Partners
- Registry Definition and Goals
- Application Design and Details



Background



- A survey of the State Wildlife Action Plans identified the need for a way to track on-the-ground conservation activities
 - 35 states called for strategies to monitor conservation actions
 - 6 states identified the need for a comprehensive registry



Why track conservation actions?


- To meet the reporting requirements for State Strategies
- To answer questions about:
 - where actions are taking place
 - where duplication occurs
 - where conservation gaps are
 - if actions match priorities



Why track conservation actions?

To gain understanding about:

- The scope and geographic patterns of actions
- Potential synergies among actions, partners, or adjacent lands



Who is involved?

- State wildlife agencies
- Other state and federal agencies
- Local governments
- Conservation organizations
- Industry groups
- Private funders



Partners



- Clean Water Services
- Defenders of Wildlife
- Idaho Department of Fish & Game
- Metro Regional Government
- Northwest Habitat Institute
- Oregon Department of Fish & Wildlife
- Oregon Department of Forestry
- Oregon Department of Geology and Mineral Industries
- Oregon Department of Parks and Recreation
- Oregon Institute for Natural Resources
- Oregon Watershed Enhancement Board
- The Nature Conservancy (Oregon)
- U.S. Forest Service Pacific Northwest Research Station
- Washington Department of Fish & Wildlife
- Washington Interagency Committee for Outdoor Recreation/ Salmon Recovery funding board

The Registry of Conservation Actions

- A system that records, stores, and shares conservation actions occurring on the landscape
 - Centralized database
 - Web-based and user-friendly



Conservation Actions

- Restoration or conservation projects
- Enhancement of land's conservation status
- Research, monitoring, or education activities tied to a location



How are actions tracked?

Data in:

- Online data entry form
- Harvested from other databases

Data out:

- Key word and advanced search
- Ability to export results
- Summary and analysis tools

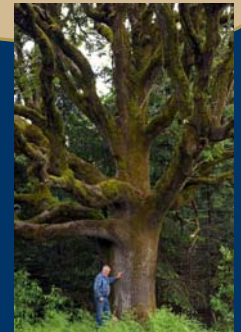
Registry Users

- Landowners
- Resource agencies
- Interest groups
- Policy-makers
- Conservation organizations
- Funders



Example Uses

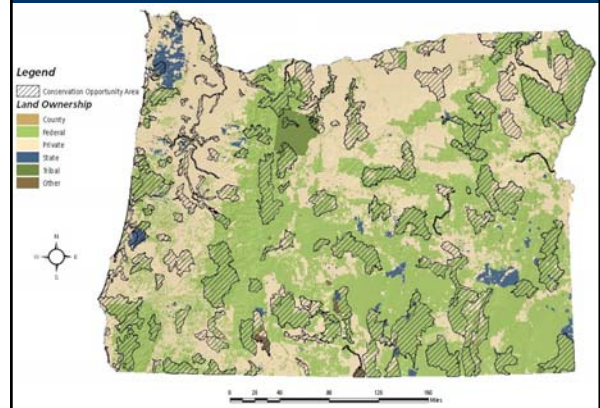
- Landowners
 - Enter projects to meet grant application requirements or to gain recognition for work already being done.
 - Search Registry for projects to get recommendations for vendors, contractors, sources of native plant seed.



Example Uses

- Agencies
 - Track work being done on the landscape to benefit species and habitats to use in planning and management decisions.
 - Find projects to fund that target certain species or habitats.
 - Use Registry projects to begin to assess the effectiveness of conservation actions.
 - Determine whether or not projects are within areas prioritized for conservation.
 - Update datasets (protected lands, Conservation Opportunity Areas, etc.)

Statewide Conservation Opportunity Areas



Example Uses



- Decision makers
 - View summary statistics for the investment of resources towards conservation.



- Volunteers
 - Find projects nearby that need volunteers.

How will the Registry work?

- Pilot: Idaho, Oregon, and Washington
- Designed for national application
 - Maps
 - Modular design
- Each participating state will have an administrator and customized homepage
- Custom home pages for organizations
 - Filter search results
 - Provide customized links and queries



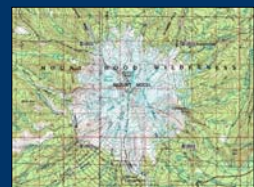
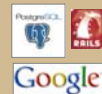
Design Goals

- Minimize human administrative tasks
- Modular architecture
 - Flexible and evolving
- Intuitive interface
- Minimal data entry time



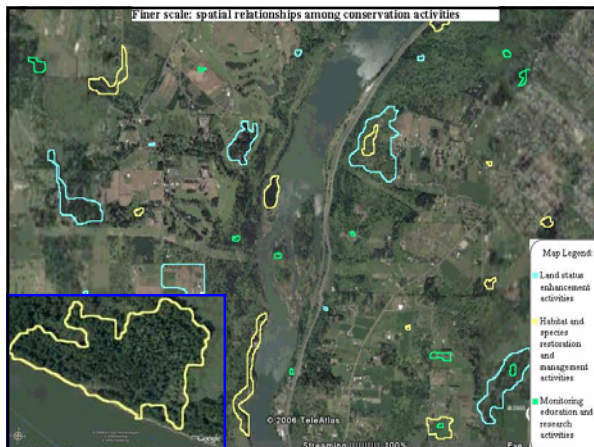
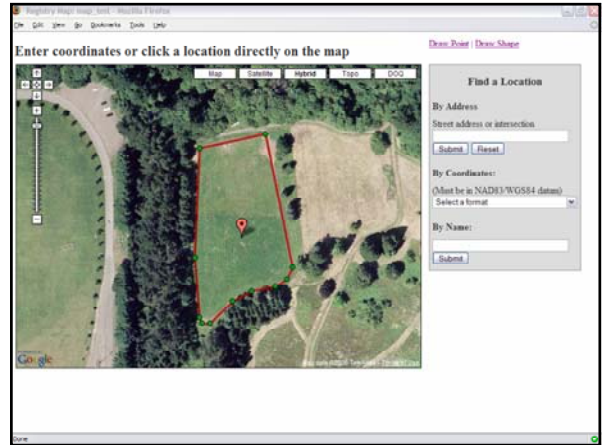
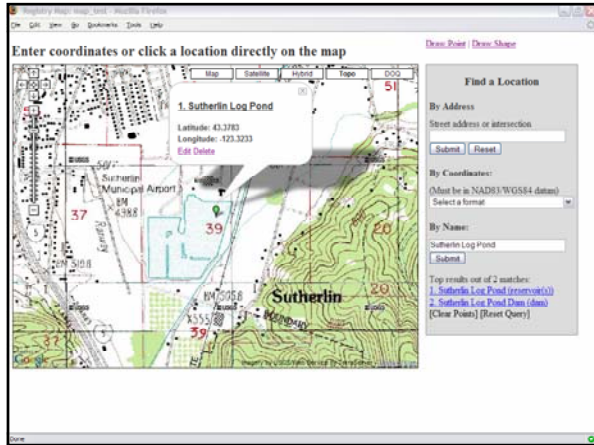
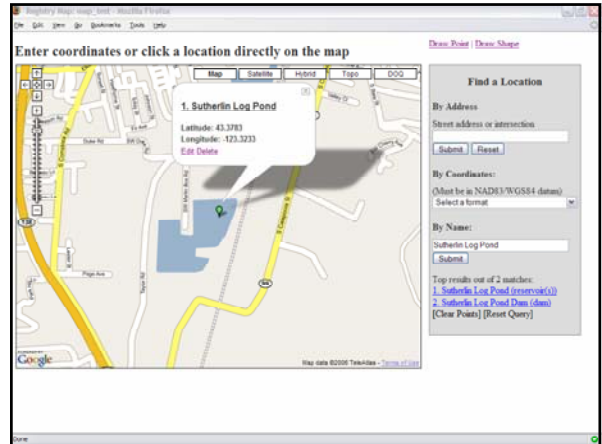
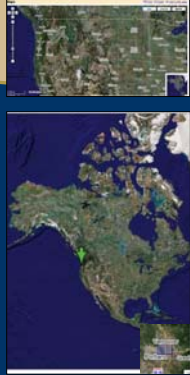
Application Details

- Architecture:
 - Ruby on Rails
 - PostgreSQL database
 - PostGIS extension
 - Google Maps API
- Web services:
 - Terraserver topographic maps and imagery
 - Google geocoding service
 - Geonames.org (GNIS)



Mapping Tool

- Google Maps
- Import other GIS background layers
- Enter action locations directly
- Outline actions on maps
- Create shape-files
- Ability to save and export maps



Development Phase 1: Project planning and mock-up

- Information architecture
- Visual design
- Mock-up of website



Development Phase 2: Functional prototype

- Data entry form
- Database design
- Advanced search options
- Basic mapping features



Development Phase 3: Functional database and web site

- Live prototype
- Advanced mapping features
 - ability to draw polygons
 - ability to search by map
- Administrative accounts



Current Development Status

- **Planning and mock up**
 - Funded and underway
- **Functional prototype**
 - Partially funded, more needed
- **Fully functional database and website**
 - End of year completion with \$



Benefits and outcomes

- Create a context for conservation actions
- Show projects relative to priorities
- Display the allocation of conservation funding
- Facilitate strategic planning
- Gain public recognition for conservation



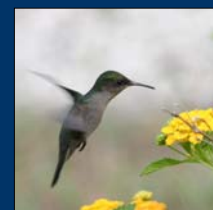
Outcomes continued...

- Facilitate communication
- Identify opportunities for partnerships
- Communicate needs
- Identify investment opportunities
- Help us learn from the experiences of others



Project Needs

- Funding
- Data on conservation actions
- Outreach to users

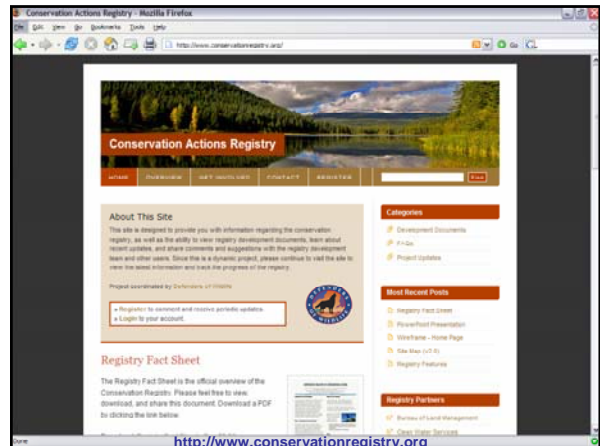


Contact Information:

Sara Vickerman
Defenders of Wildlife
1880 Willamette Falls Drive #200
West Linn, Oregon 97068
503-697-3222
E-mail: svickerman@defenders.org



Moran Rosenthal
Avi Hihinashvili
Institute for Natural Resources
1322 SE Morrison Street
Portland OR, 97214-2423
503-731-3070 ext 100.
E-mail:
moran_rosenthal@oregonstate.edu
avi.hihinashvili@oregonstate.edu



Our Thanks to the Photographers:



- Jason Blazar
- Bruce Campbell
- Claire Fiegenger
- Lori Hennings
- Bob Hooten
- Brome McCreary
- Bruce Newhouse
- SOLV
- Alan D. St. John
- Bruce Taylor
- Jennifer Thompson
- USFWS
- ODFW
- Institute for Natural Resources

Questions?

